

# 4B Vise Splice

BETTER BY DESIGN

## 4B Vise Splice

### Elevator Belt Splices & Fasteners

#### APPLICATION

4B Vise Splices are mechanical splices for use on most PVC and rubber elevator belts. Each splice unit is made of three pieces. The outside plates have two different gripping areas. The ribbed gripping area is mounted towards the face of the belt. The opposite end has a series of both longitudinal and axial "teeth." The center plate is symmetrical and cannot be improperly installed around its elongated center hole.

The splice functions by using the tension supplied by the belting. This tension on the belt ends pulls the outer plates apart, and forces gripping pressure towards the teeth on the splice unit. The greater the belt tension, the more pressure is exerted on the gripping teeth at the forward end of the splice.

#### NON-FERROUS

- ▶ Usable on Belts of up to 800 PIW Tensile Strength
- ▶ Non-Sparking, Non-Corroding & Non-Rusting
- ▶ Bronze Color
- ▶ 2.9 lbs. Each

#### FERROUS

- ▶ Usable on Belts of up to 600 PIW Tensile Strength
- ▶ Silver Color
- ▶ 2.6 lbs. Each

#### FEATURES

- ▶ For Belts 600 to 800 PIW Tensile Strength
- ▶ Use on PVC and Rubber Belting
- ▶ For Belts 600 to 800 PIW Tensile Strength
- ▶ Non-Sparking (Non-Ferrous Version)
- ▶ Max. Temperatures: Ferrous 600°F, Non-Ferrous 500°F
- ▶ Each Splice Accommodates 2" of Belt Width

#### PART NUMBERS/ACCESSORIES

- ▶ MBG2            Vise Splice CI
- ▶ 4BVS-AB       Vise Splice AB
- ▶ MBGT-9        Belt Power Punch Tool
- ▶ 4BVS-TT        Punch Template Tape (Supplied with Splice)

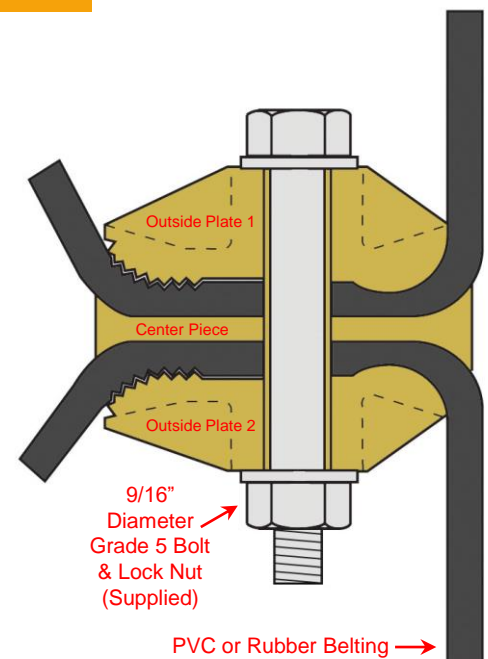


Vise Splice  
Non-Ferrous  
(4BVS-AB)



Vise Splice  
Ferrous  
(MBG2)

**FREE**  
Elevator & Conveyor  
Engineering  
Design Service



- Do Not Use on Manlifts or Wing Pulleys
- Never Re-Use Hardware: Always Use New Bolts, Nuts & Washers

Please refer to instruction manual for correct installation.  
Information subject to change or correction. July 2016