

Starco™ Steel Elevator Buckets

Super Low Profile Elevator Bucket

OVERVIEW

Starco™ steel elevator buckets are engineered for higher throughput elevator legs. Their shallow design, tapered sides and low back height ensure maximum bucket fill at high speeds on smaller pulley diameters. The unique front profile guarantees clean discharge over a wider range of operation speeds than conventional or other low profile buckets.



MATERIAL

- ▶ Seamless Steel or Stainless Steel

TEMPERATURE RANGE

- ▶ Contact 4B

FEATURES

- ▶ Super Low Profile
- ▶ Belt Speeds Up To 895 ft./min.
- ▶ Pressed Seamless Steel
- ▶ Compound Curve Delivers Smooth Discharge

APPLICATIONS

- ▶ Grain, Grain By-Products, Feed, Seed, Pellets, Powders, Chemicals & Other Industrial Products

ACCESSORIES

- ▶ Elevator Bolts, Washers & Nuts
- ▶ Belting - Rubber, PVC, Steel Web
- ▶ Belt Fasteners / Splices
- ▶ Pulley Lagging



Starco™ Steel Elevator Buckets

BETTER BY DESIGN

TECHNICAL SPECIFICATIONS

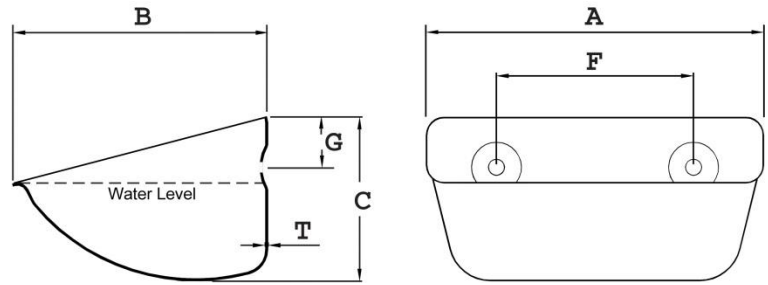
Starco™ Steel Elevator Buckets

FREE

Elevator & Conveyor Engineering Design Service

Take advantage of 4B's free, guaranteed worldwide technical support service from a team of material handling engineers specializing in the design and upgrade of bucket elevators and conveyors.

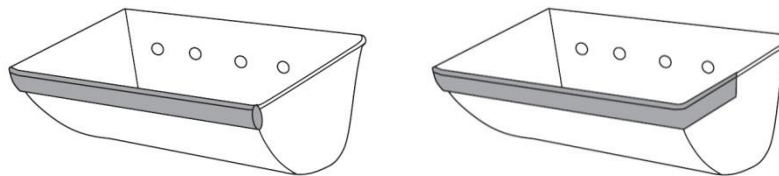
Whether you want a new elevator design, or just want to increase the capacity and performance of your existing elevator, our engineers can help.



Nominal Size (in.)	Part #	Dimension (in.)				Standard Punching (in.)				Capacity (cu. in.)		Minimum Spacing (in.)	Weight (lbs.)
		Length A	Projection B	Back Depth C	Thickness (Gauge) T	# Holes	Bolt Size	Hole Center F	Dist. Down G	Water Level	Gross		
4 x 3-1/2	SS100	4-3/16	3-1/2	2-5/8	20	2	5-16	2	3/4	15	20	3	0.26
5 x 4-1/2	SS130	5-1/2	4-1/2	3-1/16	16	2	5/16	2-3/4	7/8	25	37	3-7/16	0.78
7 x 5-1/2	SS180	7-1/4	5-1/2	3-5/8	16	2	5/16	3-15/16	1	55	79	3-3/4	1.16
9 x 6-1/2	SS230	9-3/8	6-1/2	4-1/4	14	2	3/8	4-3/4	1-5/16	101	137	4-3/8	2.66
11 x 6-1/2	SS280	11-3/8	6-1/2	4-1/4	14	3	3/8	3-3/16	1-5/16	127	178	4-3/8	2.90
12 x 7	SS300	12-1/8	7-3/16	4-5/8	14	3	5/16	4	1-5/16	150	223	4-13/16	3.15
12 x 8	SS300-215	12-1/4	8-1/2	5-1/2	14	3	3/8	4	1-1/2	250	342	5-1/4	4.52
13 x 8-1/2*	SS330	13-3/8	8-7/16	5-1/8	14 or 12	3	3/8	4-3/4	1-1/2	239	336	5-1/2	4.60 - 5.91
15 x 8-1/2*	SS370	15	8-7/16	5-1/8	14 or 12	4	3/8	3-9/16	1-1/2	255	377	5-1/2	5.25 - 6.57
18 x 8-1/2	SS450	18-1/4	8-7/16	5-1/8	12	5	3/8	3-1/2	1-1/2	341	488	5-1/2	7.50

- * Available In 14 & 12 Gauge Thickness
- All Sizes Have Recessed Bolt Holes
- Custom Drilled Holes / Thicknesses / Wear Bands Available

Front Wear Bands Available



Formula for Quick Capacity Estimate

$$* \text{ Cu Ft/Hr} = \frac{\text{** bucket capacity (in}^3\text{)}}{1728} \times \frac{12}{\text{bucket spacing (in)}} \times \text{Belt Speed (ft/min)} \times 60$$

** Elevator production calculated with the bucket usable capacity figure. However, actual capacity depends on the material being elevated and on the elevator belt speed/pulley diameter and head/intake design.