

Rotech Encoder Heavy duty Speed Monitor/Encoder

**NEW
PRODUCT**

APPLICATION

The 4B heavy duty stainless steel Rotech encoder is used primarily for protecting equipment and personnel from dangerous underspeed/belt slip conditions in extreme environments. Other applications include accurate speed control, direction of rotation detection, gate position indication and counting the number of revolutions of the shaft.

METHOD OF OPERATION

An inductive sensing device in the body of the encoder detects a steel rotor. On slow speed or accurate position control, a photodiode detects the slots on a steel disk. One pulse is created for each rotor or slot so the unit can be connected directly to a PLC/computer or 4B control module. The shaft to be monitored is drilled and taped to take the 1/2" UNC Rotech Bolt. The unit is secured to the shaft with this bolt and is able to move with the shaft. No guards are required as the rotating components are encased inside the housing of the encoder. No brackets are required as the encoder couples directly to the end of the shaft and floats with the shaft.

FEATURES

- ▶ 304 or 316 Stainless Steel Construction
- ▶ Totally Self Contained (No Guards Required)
- ▶ Ultra Heavy Duty Design
- ▶ 1 to 1,000 Pulses Per Revolution
- ▶ Multiple Outputs AC/DC
- ▶ Intrinsically Safe Version Available
- ▶ Class II Division 1 Approved Version Available

PART NUMBERS/ACCESSORIES

- ▶ RSE304SS4VB Rotech Encoder - 304 Stainless Steel
- ▶ RSE316SS4VB Rotech Encoder - 316 Stainless Steel
- ▶ XRSE Ultra Wash Down Version (With Grease Zerk)
- ▶ MAG2000 Mag-Con™ Magnetic Connector
- ▶ SR2V1-1 Speed Relay
- ▶ TACH3V5 Tachometer



ATEX Approved
Versions Available



Mag-Con™
U.S. Pat # 6,964,209



Speed Relay



Tachometer

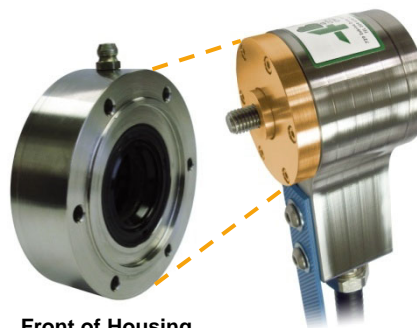
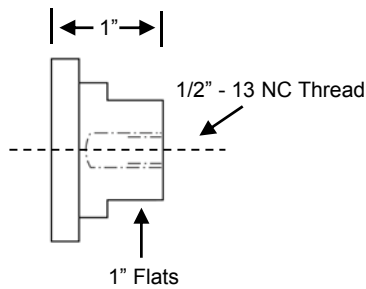
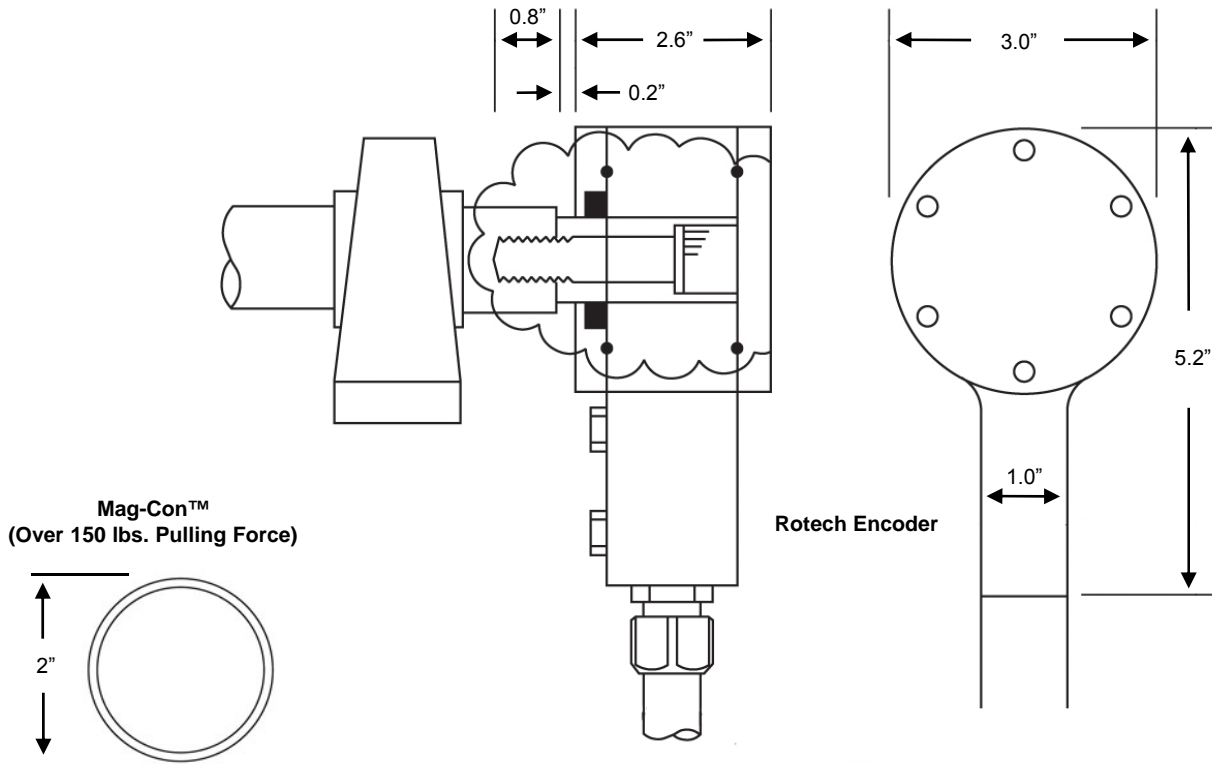
Detailed specification, wiring diagrams and installation/operating instructions available upon request.

Please refer to instruction manual for correct installation.
Information subject to change or correction. Jan 2010.

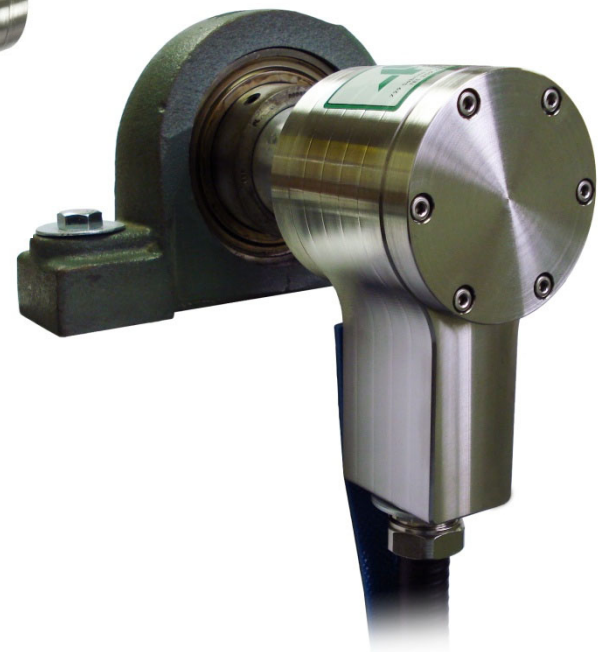
Stainless Steel Rotech

TECHNOLOGY · INNOVATION · QUALITY · VALUE

Dimensions



Front of Housing
XRSE Version
(Factory Installed)



Rotech Mounted on Shaft with
Mag-Con™ Magnetic Connector

TECHNICAL SPECIFICATIONS

Rotech Encoder – Stainless Steel Version

Rotech Encoder	
Enclosure:	304 or 316 Stainless Steel (Specify)
Pulse Rate:	1 - 1,000 PPR
Maximum Operating Speed:	10,000 RPM
Thread Size:	1/2" UNC or 12 mm
Temperature:	-13°F to 302°F
Weight:	6.75 lbs.
Output:	PNP, NPN, NAMUR, QUADRATURE
Protection:	IP67
Approval:	Class II Division 1 (U.S. & Canada)

Detailed specification, wiring diagrams and installation/operating instructions available upon request.

Please refer to instruction manual for correct installation.
Information subject to change or correction. Jan 2010.