

Roto-Switch

Rotary Level Indicator

APPLICATION

The Roto-Switch rotary paddle switch is designed to detect high and low levels of bulk granular solids in bins, tanks, silos, and as blockage detectors in spouts.

METHOD OF OPERATION

The detection of material is achieved by a rotating paddle. If material impedes the rotation of the paddle, the motor topples of its axis and triggers a contact. The power supply to the motor is cut and the contact signals that a critical level has been reached, which will cause the motor for any inlet or outlet to close down or start up. When the level of the material reaches normal levels again, the motor returns to its initial position and restarts.

In the case of a power failure, the Roto-Switch has a fail safe relay that will signal the control room or sound an audible alarm indicating that the unit is not working. Through the control circuit, this alarm can stop any motor filling or emptying the silo.

FEATURES

- ▶ Glass Fiber Reinforced Nylon Housing
- ▶ Vertical Extensions to 14 Feet are Available
- ▶ Power Fail Alarm
- ▶ Automatic Power Shut-Off
- ▶ Relay Contact Output
- ▶ 4 Paddle Versions Available
- ▶ Heavy Duty Version Available*

PART NUMBERS/ACCESSORIES

- | | |
|-------------|---|
| ▶ RL11V6FCA | Roto-Switch 110/240 VAC (Universal Supply) |
| ▶ RL12V6FCA | Heavy Duty Roto-Switch 110/240 VAC (Universal Supply) |
| ▶ RLISP1 | Insertable Paddle |
| ▶ RLISP2 | Insertable Paddle |
| ▶ RLISP3 | Three Vane 5" Diameter Paddle |
| ▶ RLISP4 | Three Vane 7" Diameter Paddle |
| ▶ SMP | Side Mounting Plate |
| ▶ SMPS | Side Mounting Plate – Stainless Steel |
| ▶ TMP | Top Mounting Plate |
| ▶ TMPS | Top Mounting Plate – Stainless Steel |

*Heavy Duty Versions – Available with stainless steel bearings and Teflon/stainless steel shaft seals. Ideally suited to wet and humid conditions.

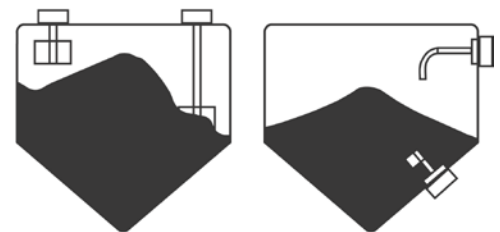
Detailed specification, wiring diagrams and installation/operating instructions available immediately upon request.



Roto-Switch with RLISP3
Three Vane 5" Diameter Paddle



Mounting Options (Top & Side)



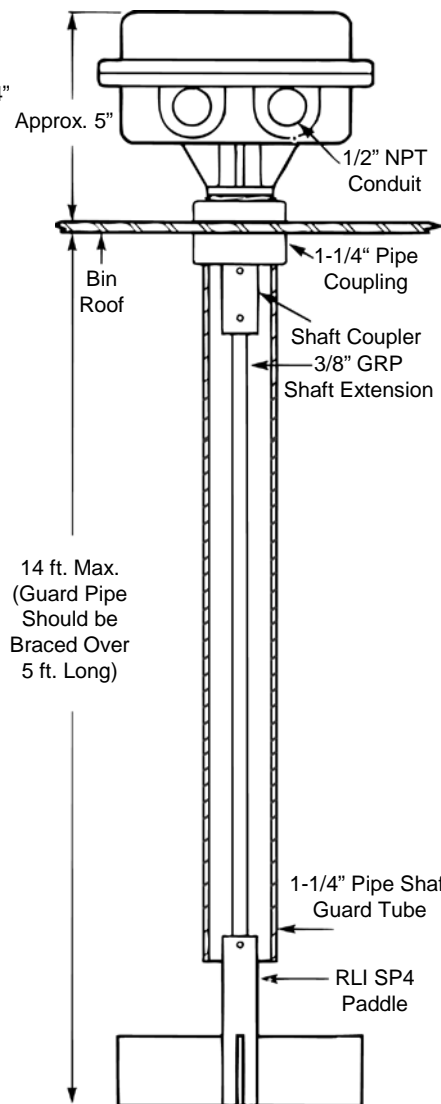
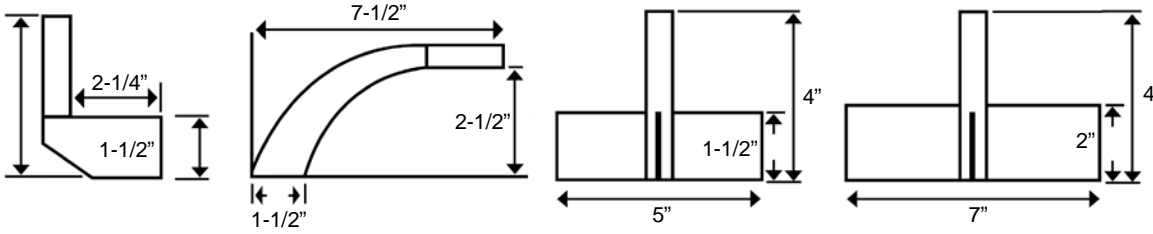
RLISP1 Paddle

RLISP2 Paddle

Please refer to instruction manual for correct installation. Information subject to change or correction. March 2008.

PADDLE VARIATIONS

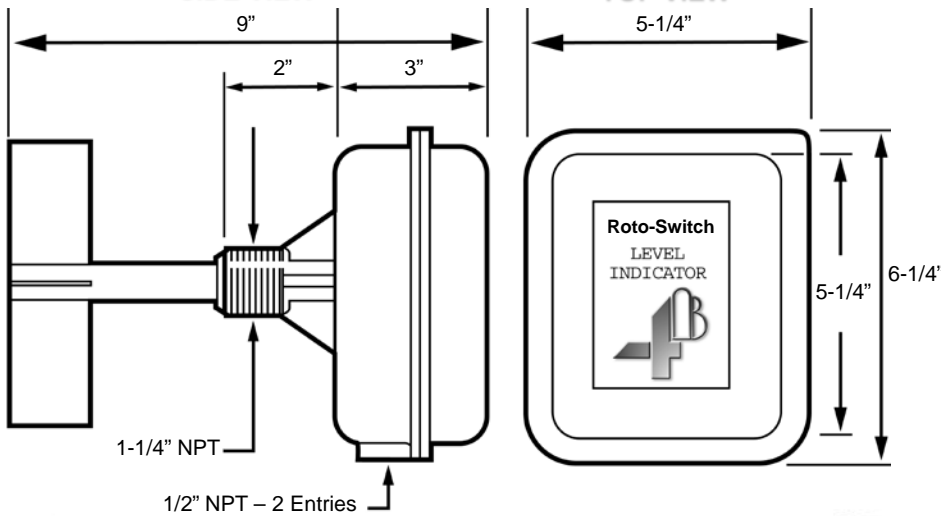
WITH SHAFT EXTENSION



RLISP1	RLISP2	RLISP3	RLISP4
Single Vane - Insertable for Materials Over 70 PCF (Coal, Stones, Etc.)	Single Vane - Insertable for Materials 30 - 70 PCF (Powders, Light Grain & Seed)	Three Vane for Materials 30 - 70 PCF (Grain, Beans, Oil Seeds)	Three Vane for Materials Under 30 PCF (Flour & Light Materials)

SIDE VIEW

TOP VIEW



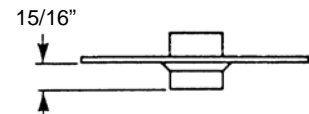
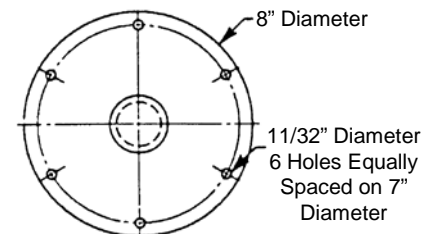
TECHNICAL SPECIFICATIONS

Roto-Switch: Rotary Level Indicator

RLI1V6FCA Roto-Switch	
Power Supply:	120/240 VAC (Universal Supply)
Supply Tolerance:	± 10%
Power Consumption:	400 mA
Fuse:	1 Amp
Operating Temperature:	-13°F to + 176°F
Output:	Voltage Free Relay - 1 Pole Normally Open 1 Pole Normally Closed
Contact Rating:	Rated at 5 Amps/240 Volts
Conduit Entry:	Two, 1/2\" NPT
Mounting:	1-1/4\" NPT
Connections:	Screw Terminal Block
Enclosure:	Flame Retardant Glass Reinforced Nylon
Weight:	2.25 lb. (Power Pack Only)
Protection:	IP65 - NEMA 4
Approvals:	CE - Europe



MOUNTING PLATE



Please refer to instruction manual for correct installation. Information subject to change or correction. March 2008.