

GB Spidex Elevator Bucket

The Patented Bottomless Elevator Bucket System

APPLICATION

With the GB system, buckets are centered at very close spacing with a series of buckets without bottoms followed by a bucket with a bottom. The material is lifted in a continuous column and the carrying space normally wasted between conventional buckets is fully utilized to achieve much greater capacity. The buckets “fan out” as they pass over the head and tail pulleys to facilitate pick up or discharge.

The system increases capacity of an existing elevator leg at a much lower cost than purchase of a new bucket elevator. The GB System can also be used in new elevators to give the same capacity as larger elevators using traditional buckets, saving manufacturing costs and plant space.

GB Buckets are particularly useful with sticky products which can clog up the bottoms of conventional buckets reducing capacity and increasing maintenance. With GB Buckets, only the bucket with the bottom can become clogged, and capacity can be rated to allow for this. The remaining buckets, being bottomless, are self cleaning. Aerial products are also handled easily as GB Buckets have the ultimate vented design.

FEATURES

- ▶ Double Existing Capacity
- ▶ Handles Sticky or Aerial Products
- ▶ Self Cleaning
- ▶ Pressed Seamless Steel or Stainless Steel

ACCESSORIES

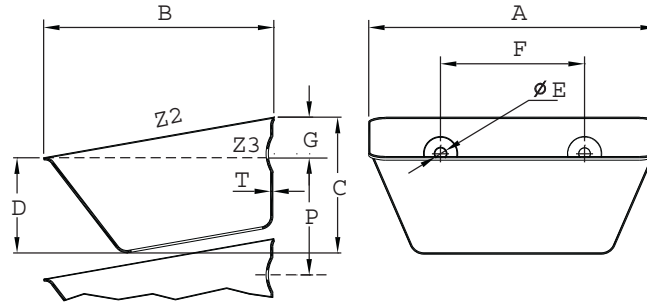
- ▶ Bolts - Norway, Fanged, Euro or Easifit
- ▶ Washers & Nuts
- ▶ Belting - Rubber, PVC, Steel Web
- ▶ Belt Fasteners



Please refer to instruction manual for correct installation.
Information subject to change or correction. March 2008.

TECHNICAL SPECIFICATIONS

GB Spidex Elevator Bucket



Nominal Size	Part #	Dimension (Inches)			Specifications						Weight	
		Length A	Projection B	Back Depth C	Steel Gauge	# Holes	Bolt Size	Hole Center	Actual Capacity	Spacing on Belt	Open Cup	Closed Cup
4 x 3-1/2	GB100	4-3/16	3-1/2	1-3/4	18	2	5/16	1-15/16	14	1-15/16	0.22	0.26
5 x 4	GB130	5-7/16	4-3/8	2-3/4	20	2	5/16	2-3/4	27	2-1/8	0.35	0.46
7 x 5	GB180	7-5/16	5-1/2	3-7/16	16	2	5/16	3-15/16	70	2-13/16	1.00	1.20
8-1/2 x 3-5/8	GB215	8-21/32	3-21/32	2-1/2	16	2	5/16	5	58	2-11/16	0.90	1.10
9 x 6	GB230	9-1/4	6-3/8	4	14	2	5/16	4-3/4	113	3-5/32	1.85	2.45
11 x 6-1/2	GB280	11-7/16	6-1/2	3-5/32	14	3	3/8	3-9/16	163	3-7/16	2.20	2.90
12 x 6	GB300	12	6-1/2	4-3/16	14	3	5/16	3-9/16	165	3-7/16	2.43	3.09
13 x 7-1/2	GB325	13-3/16	7-1/2	3-15/32	14	3	3/8	3-15/16	220	3-15/16	2.90	3.75
13-1/2 x 7-1/2	GB330	13-3/8	7-1/2	3-29/32	11	3	3/8	3-15/16	275	4-5/32	4.50	6.25
14 x 8	GB350	14	7-7/8	5	12	4	3/8	3-9/16	290	4-3/8	4.30	5.51
15 x 6	GB380	14-7/8	6-1/2	4-3/16	12	4	5/16	3 x 5 x 3	214	3-7/16	3.75	4.75
15 x 9-1/2	GB370	15-1/8	9-15/16	4-5/8	11	4	3/8	3-9/16	488	4-15/16	6.30	9.20
16 x 8	GB400	16	8-9/16	5-13/16	10	4	3/8	4	386	4-15/16	5.07	6.50

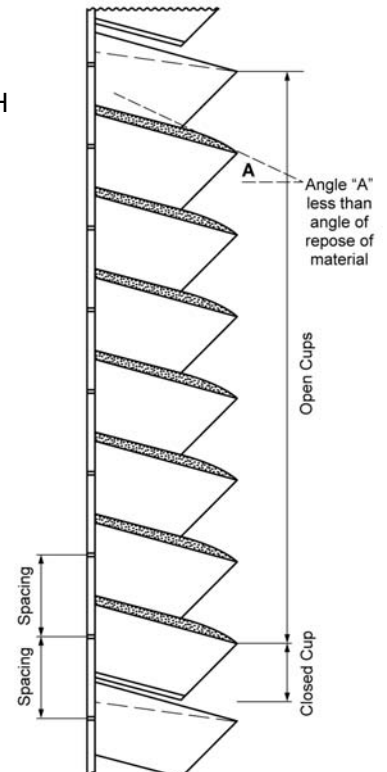
Other sizes are available to order.

Comparison of capacity between "GB" style cups and "CC" style cups

"GB" Style 12 x 6 3/16" spacing, 630 ft/min belt at actual working capacity = 12,613 CFH

"CC" Style 12 x 6 7" spacing, 630 ft/min belt at 75% of gross capacity = 7,474 CFH

New systems should be designed by 4B



FREE
Elevator & Conveyor Engineering Design Service

Take advantage of 4B's free, guaranteed worldwide technical support service from a team of material handling engineers specializing in the design and upgrade of bucket elevators and conveyors.

Whether you want a new elevator design, or just want to increase the capacity and performance of your existing elevator, our engineers can help.

Please refer to instruction manual for correct installation. Information subject to change or correction. March 2008.