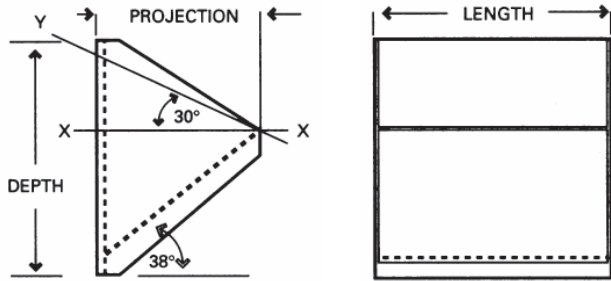




Fabricated Industrial Metal Elevator Buckets

MF Style Steel

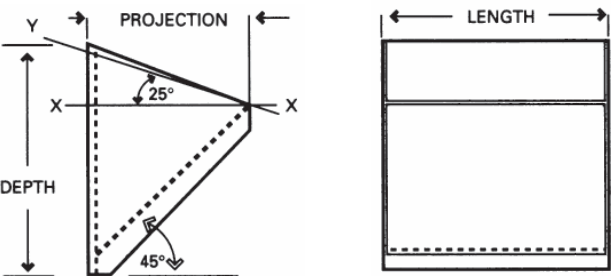
- Continuous discharge for gentler handling
- Mounted on chain or belt
- Suitable for fluffy and free-flowing materials or materials requiring careful handling
- Options: carbon, stainless steel, AR plate, wear lips, and hard weld



Bucket Size, Inches			Weight, Pounds				Capacity, Cu. Ft.	
L Length	P Projection	D Depth	12 Gauge Steel	10 Gauge Steel	3/16" Steel	1/4" Steel	Filled to Line X-X	Filled to Line X-Y
8	5	7-3/4	5.1	6.3	8.7		.040	.070
9	6	9-1/4	6.7	8.6	11.9		.068	.118
10	5	7-3/4	5.9	7.4	10.2		.050	.090
10	6	9-1/4	7.2	9.2	12.7		.075	.130
10	7	11-5/8	9.3	11.9	16.5		.103	.180
10	8	11-5/8	9.9	12.8	17.8	23.2	.135	.235
11	6	9-1/4	7.7	9.9	13.6	18.13	.081	.145
12	6	9-1/4	8.1	10.5	14.5	19.33	.091	.155
12	7	11-5/8	10.4	13.4	18.6	24.80	.125	.218
12	8	11-5/8	11.2	14.4	20.0	26.1	.163	.275
14	7	11-5/8	11.6	14.9	20.7	27.60	.145	.253
14	8	11-5/8	12.4	16.0	22.2	29.1	.190	.325
16	8	11-5/8	13.7	17.6	24.5	32.0	.220	.375
16	12	11-5/8		29.9	40.6	54.8	.490	.852
18	8	11-5/8		19.2	26.7	35.0	.250	.420
18	10	15		25.9	36.1	47.3	.379	.662
20	8	11-5/8		20.8	29.0	38.0	.270	.470
20	12	17-5/8		34.8	48.5	63.9	.620	1.075
24	10	11-5/8		27.4	38.2	50.0	.512	.850
24	12	17-5/8		39.8	55.4	73.1	.745	1.295

HF Style Steel

- Continuous discharge for gentler handling
- High front for increased capacity
- Mounted on chain or belting
- Reduces damage to materials
- Options: carbon, stainless steel, AR plate, wear lips, and hard weld



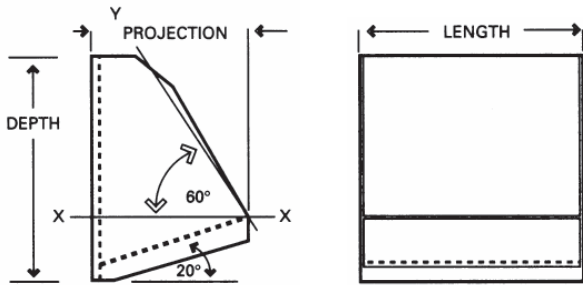
Bucket Size, Inches			Weight, Pounds				Capacity, Cu. Ft.	
L Length	P Projection	D Depth	12 Gauge Steel	10 Gauge Steel	3/16" Steel	1/4" Steel	Filled to Line X-X	Filled to Line X-Y
8	5	7-3/4	4.9	6.2	8.5		.052	.080
10	5	7-3/4	5.7	7.3	10.0		.065	.100
10	6	9-1/4	7.2	9.1	12.6		.098	.145
10	7	11-5/8	9.1	11.6	16.0	20.9	.130	.190
12	6	9-1/4	8.3	10.4	14.4	19.20	.115	.175
12	7	11-5/8	10.3	13.2	18.2	23.9	.155	.240
12	8	11-5/8	11.3	14.3	20.0	26.0	.205	.295
14	7	11-5/8	11.5	14.8	20.4	26.7	.184	.280
14	8	11-5/8	12.6	16.0	22.4	28.1	.240	.350
16	8	11-5/8	13.9	17.7	24.7	32.2	.275	.395
16	12	17-5/8		30.3	41.9	55.0	.635	.900
18	10	15		26.2	36.1	47.7	.485	.720
20	12	17-5/8		35.1	49.1	64.6	.800	1.150
24	12	17-5/8		40.5	56.3	74.3	.960	1.305

Please refer to instruction manual for correct installation. Information subject to change or correction. May 2007.

Fabricated Industrial Metal Elevator Buckets

LF Style Steel

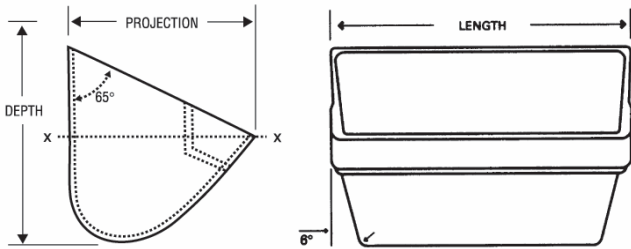
- Continuous discharge for gentler handling
- Designed for inclining elevators
- Suitable for finely pulverized or wet materials
- Mounted on chain or belt
- Options: carbon, stainless steel, AR plate, wear lips, and hard weld



Bucket Size, Inches			Weight, Pounds				Capacity, Cu. Ft.	
L Length	P Projection	D Depth	12 Gauge Steel	10 Gauge Steel	3/16" Steel	1/4" Steel	Filled to Line X-X	Filled to Line X-Y
10	6	9-1/4	6.8	8.8	12.1		.035	.168
10	7	11-5/8	8.5	10.8	15.1		.050	.242
12	6	9-1/4	7.8	10.0	13.8		.042	.201
12	7	11-5/8	9.6	12.3	17.1	22.80	.060	.302
12	8	11-5/8	11.2	14.4	20.1	26.80	.075	.347
14	7	11-5/8	10.7	13.7	19.1	25.50	.070	.345
16	8	11-5/8	13.6	17.4	24.3	32.40	.101	.463
16	12	17-5/8		29.3	40.7	53.6	.229	1.093
18	10	15		25.4	35.0	46.5	.183	.494
20	8	11-5/8		20.5	28.5	38.00	.126	.573
20	12	17-5/8		33.9	47.1	62.0	.287	1.365
24	12	17-5/8		38.5	53.5	70.5	.346	1.643

AA Style Steel

- Thick reinforced lip for superior abrasion resistance and strength
- Resistant to distortion from scooping heavy or packed materials
- Typical in sand, glass or gravel
- Mounted on chain or belting
- Options: carbon, stainless steel, AR plate, wear lips, and hard weld



Bucket Size, Inches			Weight, Pounds				Capacity, Cu. Ft.	
L Length	P Projection	D Depth	12 Gauge Steel	10 Gauge Steel	3/16" Steel	1/4" Steel	Filled to Line X-X	Filled to Line X-Y
4	2-3/4	3	1.15	1.48	1.95		.006	.009
5	3-1/2	3-3/4	1.81	2.33	3.15		.013	.022
6	4	4-1/4	2.35	3.02	3.96	5.27	.020	.032
7	4-1/2	5	3.17	4.08	5.35	7.12	.034	.051
8	5	5-1/2	4.15	5.33	7.06	9.39	.047	.072
10	6	6-1/4	5.73	7.37	9.79	13.02	.076	.120
11	6	6-1/4	6.16	7.93	10.46	13.91	.084	.133
12	6	6-1/4	6.60	8.49	11.29	15.02	.091	.145
12	7	7-1/4	8.11	10.42	13.93	18.53	.124	.199
14	7	7-1/4		11.72	15.70	20.88	.145	.232
14	8	8-1/2		13.90	18.64	24.80	.202	.316
15	7	7-1/4		12.37	16.58	22.05	.155	.248
16	7	7-1/4		13.03	17.47	23.24	.165	.265
16	8	8-1/2		15.41	20.67	27.49	.231	.362
18	8	8-1/2		16.92	22.70	30.19	.260	.407
18	10	10-1/2		21.48	28.88	38.41	.336	.632
20	8	8-1/2		18.42	24.74	32.90	.289	.452
24	8	8-1/2		21.43	28.81	38.32	.347	.543

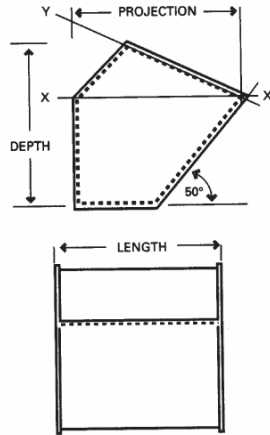
Please refer to instruction manual for correct installation. Information subject to change or correction. May 2007.



Fabricated Industrial Metal Elevator Buckets

AC Style Steel

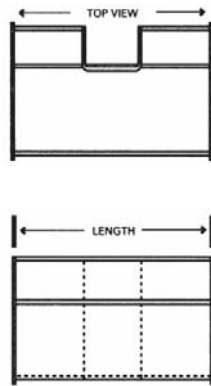
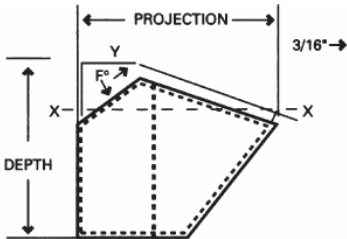
- High front for greater capacity
- Hooded back for closer spacing
- Typical in cement, gypsum powder or other powdery materials
- Venting and drain holes available
- Mounted on chain or belting
- Options: carbon, stainless steel, AR plate, wear lips, and hard weld



Bucket Size, Inches			Weight, Pounds		Capacity, Cu. Ft.	
L Length	P Projection	D Depth	3/16" Steel	1/4" Steel	Filled to Line X-X	Filled to Line X-Y
12	8	8-1/2	18.25	24.30	.231	.303
14	8	8-1/2	20.30	27.00	.271	.356
16	8	8-1/2	22.48	29.98	.311	.408
18	10	10-1/2	31.15	38.95	.488	.691
20	10	10-1/2	33.68	42.10	.542	.768
24	10	10-1/2	39.67	52.69	.651	.921
27	12	12-1/2	53.84	71.46	1.072	1.474

ACS Style Steel

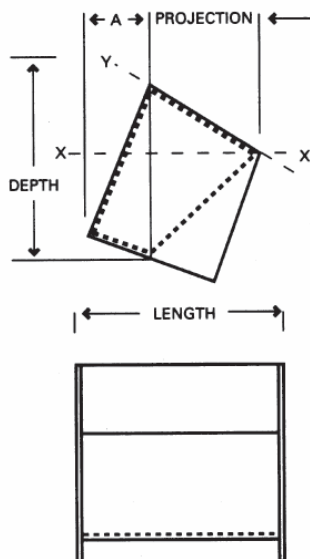
- High front, saddlebag or wrap around feature increases capacity
- Hooded back permits close bucket spacing
- Suitable for handling abrasive materials
- Options: carbon, stainless steel, AR plate, wear lips, and hard weld



Bucket Size, Inches				Weight, Pounds		Capacity, Cu. Ft.	
L Length	P Projection	D Depth	F°	Steel		Filled to Line X-X	Filled to Line X-Y
				With Lip	W/O Lip		
14	12	11-3/8	26	36	32	.37	.53
16	12	11-3/8	26	39	35	.44	.62
18	12	11-3/8	26	42	37	.51	.71
21	14	13-3/8	28	56	51	.78	1.08
24	14	13-3/8	28	62	56	.93	1.28
27	15	13-3/8	21	72		1.29	1.62
30	15	13-3/8	21	84		1.47	1.84

SC Style Steel

- Suitable for heaviest materials
- Designed for super capacity elevators
- Typical in asphalt and concrete applications
- Mounted between two strands on chain
- Design offers increased capacity
- Options: carbon, stainless steel, AR plate, wear lips, and hard weld



Bucket Size, Inches				Weight, Pounds			Capacity, Cu. Ft.	
L Length	P Projection	D Depth	A Inches	10 Gauge Steel	3/16" Steel	1/4" Steel	Filled to Line X-X	Filled to Line X-Y
12	8-3/4	11-5/8	4-9/16	22	29	39	.35	.54
14	8-3/4	11-5/8	4-9/16	23	31	41	.41	.63
16	8-3/4	11-5/8	4-9/16	25	34	45	.46	.72
16	12	17-5/8	6-1/2	43	58	76	1.11	1.55
18	8-3/4	11-5/8	4-9/16	27	36	48	.52	.81
20	8-3/4	11-5/8	4-9/16	29	39	52	.58	.90
20	12	17-5/8	6-1/2	49	67	88	1.40	1.94
24	12	17-5/8	6-1/2	55	75	104	1.68	2.33
30	12	17-5/8	6-1/2	65	88	117	2.11	2.91
36	12	17-5/8	6-1/2	73	99	132	2.53	3.49

Please refer to instruction manual for correct installation. Information subject to change or correction. May 2007.