



# *Level Indicators*

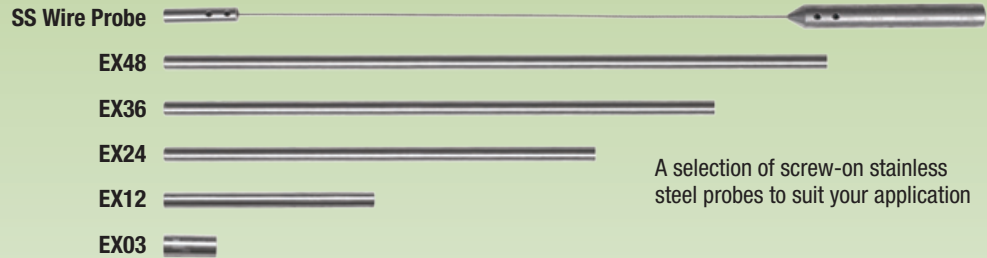


*A complete line of indicators and accessories  
designed for all your level monitoring requirements.*

BETTER BY DESIGN

## Auto-Set™

A user friendly, reliable point level indicator for bulk granular solids, powders and liquids. Digital display, push-button calibration and material build-up compensator make this unit the elite point level sensor.



Model	ATs7	ATs7 With Extended Power Shield	ATs7 Flush Probe
Description	RF capacitance point level indicator	RF capacitance point level indicator for thick-walled silos	RF capacitance heavy-duty plugswitch
Features	<ul style="list-style-type: none"> <li>• Push button calibration</li> <li>• Digital display</li> <li>• Internal timer</li> <li>• Automatic material build-up compensator</li> <li>• Attachable SS probes</li> </ul>	<ul style="list-style-type: none"> <li>• Push button calibration</li> <li>• Digital display</li> <li>• Internal timer</li> <li>• Automatic material build-up compensator, 12 or 16 inches long</li> <li>• Attachable SS probes</li> </ul>	<ul style="list-style-type: none"> <li>• Push button calibration</li> <li>• Digital display</li> <li>• Internal timer</li> <li>• Automatic material build-up compensator</li> <li>• No moving parts</li> <li>• 1/4" Stainless Steel Plate Probe</li> <li>• Inserts 1" to 2" into tank</li> </ul>
Style	1-1/4 inch NPT mounting	1-1/4 inch NPT mounting	4 inch diameter probe with integral mount
Supply Voltage	120/240 VAC 24 VDC (universal supply)	120/240 VAC 24 VDC (universal supply)	120/240 VAC 24 VDC (universal supply)
Output	1 set of voltage-free changeover relay contacts	1 set of voltage-free changeover relay contacts	1 set of voltage-free changeover relay contacts
Approvals	<ul style="list-style-type: none"> <li>• US and Canada - Class II Div. 1 E, F, G</li> <li>• Europe - CE, ATEX (Available)</li> </ul>	<ul style="list-style-type: none"> <li>• US and Canada - Class II Div. 1 E, F, G</li> <li>• Europe - CE, ATEX (Available)</li> </ul>	<ul style="list-style-type: none"> <li>• US and Canada - Class II Div. 1 E, F, G</li> <li>• Europe - CE, ATEX (Available)</li> </ul>
Applications	Material point level indication in silos, bins and other vessels. Plug condition in chutes and discharges.	Material point level indication in thick-walled concrete silos.	Plugswitch for conveyors, bucket elevators and surge hoppers.

## Auto-Set™ Remote

A user friendly, reliable point level indicator for bulk granular solids or powders where there is high vibration and/or temperature involved. Remote electronic display/control unit allows for remote calibration/set-up away from vibration or heat.



Model	Auto-Set™ Remote Probe	Auto-Set™ Remote Control
Description	Polypropylene probe - 248° F (120° C) PEEK probe - 487° F (250° C)	Remote control unit with digital display and calibration push buttons
Features	<ul style="list-style-type: none"> <li>• No moving parts</li> <li>• No electronic components</li> <li>• Automatic material build-up compensator</li> <li>• Attachable SS probes</li> </ul>	<ul style="list-style-type: none"> <li>• Push button calibration</li> <li>• Digital display</li> <li>• Internal timer</li> <li>• DIN rail mountable</li> </ul>
Style	1-1/4 inch NPT mounting thread	DIN rail mountable enclosure
Supply Voltage	From control unit	120/240 VAC 24 VDC (universal supply)
Output	To control unit	1 set of voltage-free changeover relay contacts
Approvals	• Europe - CE, ATEX (Available)	• Europe - CE, ATEX (Available)
Applications	Material point level indication in surge bins, vibratory feeders and high temperature processes.	Material point level indication in surge bins, vibratory feeders and high temperature processes.

## Roto-Level Indicators

Rotary level indicators for point level indication of bulk granular materials in bins and silos. These electro-mechanical rotary units are simple to use and reliable. The Roto-Safe incorporates a sensor to detect that the paddle is rotating for failsafe monitoring. The Roto-Switch has an electronic circuit and power fail alarm relay. The RLI is the original basic low cost rotary level indicator with quality Swiss-made motor and gearbox.



Model	RLI™ SHAKE™	Roto-Safe™	Roto-Switch™	RLI
Description	Failsafe rotary level indicator	Failsafe rotary level indicator	General purpose rotary level indicator	Low-cost rotary level indicator
Features	<ul style="list-style-type: none"> <li>Failsafe rotation detection</li> <li>Vertical extensions to 14 ft. are available</li> <li>Shaking action for shedding material build up</li> <li>Adjustable torque control</li> <li>Direct stepper motor drive</li> <li>No clutch and no gearbox</li> <li>Adjustable timer</li> </ul>	<ul style="list-style-type: none"> <li>Failsafe rotation detection</li> <li>Glass-fiber reinforced nylon housing</li> <li>Vertical extensions to 14 ft. are available</li> <li>Sensitivity adjustment</li> <li>Adjustable timer</li> <li>Automatic power shut-off</li> <li>Dust hazard approved</li> </ul>	<ul style="list-style-type: none"> <li>Glass-fiber reinforced nylon housing</li> <li>Vertical extensions to 14 ft. are available</li> <li>Power fail alarm</li> <li>Automatic power shut-off</li> <li>Relay contact output</li> <li>Heavy-duty version</li> </ul>	<ul style="list-style-type: none"> <li>Glass-fiber reinforced nylon housing</li> <li>Vertical extensions to 14 ft. are available</li> <li>Automatic power shut-off</li> <li>Limit switch contact output</li> <li>Heavy-duty version</li> </ul>
Style	Rotary level indicator with 1-1/4 inch NPT thread	Rotary level indicator with 1-1/4 inch NPT thread	Rotary level indicator with 1-1/4 inch NPT thread	Rotary level indicator with 1-1/4 inch NPT thread
Supply Voltage	120/240 VAC 24 VDC (universal supply)	120/240 VAC 24 VDC (universal supply)	120/240 VAC (universal supply)	120 VAC - must specify 240 VAC - must specify 12 VDC - must specify 24 VDC - must specify
Output	1 set of voltage-free changeover relay contacts	1 set of voltage-free changeover relay contacts	1 set of voltage-free changeover relay contacts	1 set of voltage-free changeover relay contacts
Approvals	• Europe - CE, ATEX (Available)	• US and Canada - Class II Div. 1 E, F, G • Europe - CE, ATEX (Available)	• Europe - CE (Available)	• Europe - CE (Available)
Applications	Material point level indication in bins, silos, hoppers and other vessels where failsafe detection is required.	Material point level indication in bins, silos, hoppers and other vessels where failsafe detection is required, or for dust hazard areas.	Material point level indication in bins, silos, hoppers and other vessels.	Material point level indication in bins, silos, hoppers and other vessels.

## Binswitch

A popular range of capacitance proxy level/plug detectors for detecting dry bulk granular material level in bins, silos, hoppers and chutes. This simple but robust point level indicator has no moving parts, is self-contained with all potted electronics, and can be used in areas of high vibration. The units are simple to install on the sides or tops of steel bins/hoppers and are small enough to be used as plug detectors in discharge chutes.



Binswitch  
Shown without  
Accessories



Binswitch  
Shown with  
Mounting  
Accessories



Binswitch  
Shown with  
Extension and  
Accessories

	Programmable Binswitch	Standard Binswitch	2-Wire Binswitch
Model			
Description	Capacitance proxy sensor with programmable features	Capacitance proxy sensor shown with BAS mount, A34NPT conduit adapter and conduit elbow	Capacitance proxy sensor shown with conduit adapter, extension, mounting plate and wiring box
Features	<ul style="list-style-type: none"> <li>• User adjustable sensitivity</li> <li>• LED status lights</li> <li>• Internal timer</li> <li>• Failsafe relay adjustable for high or low level</li> <li>• Fully potted electronics</li> <li>• 6 ft. cable</li> </ul>	<ul style="list-style-type: none"> <li>• User adjustable sensitivity</li> <li>• LED status lights</li> <li>• Fully potted electronics</li> <li>• 6 ft. cable</li> <li>• Relay contact output</li> </ul>	<ul style="list-style-type: none"> <li>• User adjustable sensitivity</li> <li>• LED status lights</li> <li>• Fully potted electronics</li> <li>• 6 ft. cable</li> <li>• 2 wire device</li> </ul>
Style	30 mm cylindrical	30 mm cylindrical	30 mm cylindrical
Supply Voltage	24 to 240 VAC 12 to 240 VDC (universal supply)	120/240 VAC - must specify 12 VDC - must specify 24 VDC - must specify	24 to 240 VAC 24 to 240 VDC (universal supply)
Output	1 set of voltage-free changeover relay contacts	1 set of voltage-free changeover relay contacts	2-wire output with maximum load of 200mA
Approvals	<ul style="list-style-type: none"> <li>• US and Canada - Class II Div. 1 E, F, G</li> <li>• Europe - CE, ATEX (Available)</li> </ul>	<ul style="list-style-type: none"> <li>• US and Canada - Class II Div. 1 E, F, G</li> <li>• Europe - CE, ATEX (Available)</li> </ul>	<ul style="list-style-type: none"> <li>• US and Canada - Class II Div. 1 E, F, G</li> <li>• Europe - CE, ATEX (Available)</li> </ul>
Applications	Dry free flowing material level detection in bins, silos, hoppers and chutes.	Dry free flowing material level detection in bins, silos, hoppers and chutes.	Dry free flowing material level detection in bins, silos, hoppers and chutes.

## ACCESSORIES

### X400 Elite AlarmSwitch

Alarm panel with 8 multi-voltage inputs and alarm indication LED's for use with any type of level indicator.



### Rotary Level Paddles

Complete range of stainless steel paddles for Roto-Level Indicators.



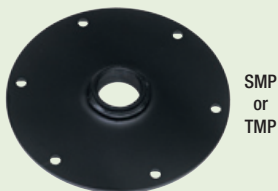
RLISP1

RLISP2

RLISP3 or  
RLISP4

### Mounting Plate

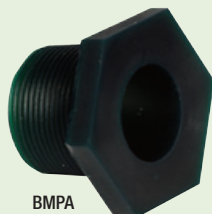
Powder-coated mild steel mounting plates with 1-1/4 inch NPT half or full coupling. Use with AutoSet, Tiltswitch, Roto-Level Indicators and Binswitches with adapters. (Also available in stainless steel.)



SMP  
or  
TMP

### BMPA Mount

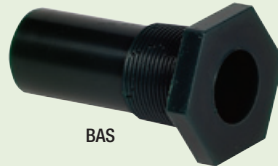
Urethane compression fitting mount for use with Binswitch. 1-1/4 inch NPT external thread.



BMPA

### BAS Mount

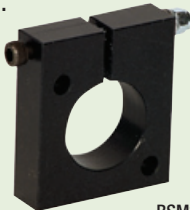
Urethane abrasion shield/mount for use with Binswitch in high-abrasion applications or as a well for liquid tanks.



BAS

### Clamp Mount

HDP clamp style mount for use with the Binswitch.



BSM3

### Conduit Adapter

Anodized aluminum 30 mm to 3/4 inch NPT adapter for use with the Binswitch.



A34NPT

### Gland Mount

Plastic gland mount for use with the Binswitch.



BMPG36

### Conduit Elbows

Steel conduit elbows for use with the Binswitch.



CE34NPT

CU34NPT

*4B level indicators  
are unsurpassed  
in quality  
and performance.*

Manufactured to ISO9001 quality standards, level indicators also carry 3rd party approvals for USA, Canada and Europe.



**IECEx RoHS**



When it comes to supplying you with virtually any material handling component, 4B has it.

Speed Switches  
Hazard Monitors  
Elevator Buckets & Bolts  
Forged Conveyor Chain  
& More!

[www.go4b.com](http://www.go4b.com)

With subsidiaries in North America, Europe, Asia, Africa and Australia along with a worldwide network of distributors, 4B can provide practical solutions for all your applications no matter the location.

[www.go4b.com](http://www.go4b.com)



[www.go4b.com](http://www.go4b.com)




 **4B BRAIME ELEVATOR COMPONENTS**  
Hunslet Road  
Leeds LS10 1JZ  
UK  
Tel: +44 (0) 113 246 1800  
Fax: +44 (0) 113 243 5021

 **4B DEUTSCHLAND**  
9 Route de Corbie  
Lamotte Warfusee  
F-8080  
France  
Tel: +49 (0) 700 2242 4091  
Fax: +49 (0) 700 2242 3733

 **4B ASIA PACIFIC**  
12/6 Moo 7, Bang Na Trad,  
K.M. 17 Bangplee  
Samutprakarn, Bangkok, 10540  
Thailand  
Tel: 00 662 750 9602  
Fax: 00 662 750 9601

 **4B COMPONENTS LTD.**  
625 Erie Ave.  
Morton, IL 61550  
USA  
Tel: 309-698-5611  
Fax: 309-698-5615

 **4B SETEM SARL**  
9 Route de Corbie  
80800 Lamotte Warfusee  
France  
Tel: +33 (0) 3 22 42 32 26  
Fax: +33 (0) 3 22 42 37 33

 **4B AFRICA**  
PO Box 1489  
Jukskei Park  
2153 Johannesburg  
South Africa  
Tel: +27 (0) 11 708 6114  
Fax: +27 (0) 11 708 1654

 **4B AUSTRALIA**  
1/18 Overlord Place  
Acacia Ridge  
Queensland, 4110  
Australia  
Tel: +61 (0) 7 3711 2565  
Fax: +61 (0) 7 3711 2574

4B is proud to be a member of the following organizations:



4B participates in GEAPS programs, see us at the next GEAPS Exchange

